



Det Kongelige
Akademi

Arkitektur
Design
Konservering

GENANVENDELIGT BEKLÆDNINGSDSIGN

Mapping & Optimering af Tekstil Genanvendelse

04.12.24

Agnes Saaby Thomsen & Malene Kristiansen



Det Kongelige
Akademi

Arkitektur
Design
Konservering





Det Kongelige
Akademi

Arkitektur
Design
Konservering





Det Kongelige
Akademi

Arkitektur
Design
Konservering

NEDBRYDNING I NATUREN

nedbryder-kæde
nedbryder-net



Døde blade, grene og dyr - ja, alt naturens affald - er hele tiden ved at blive nedbrudt til mindre dele. Nedbrydning sker ikke af sig selv, men skal ofte have hjælp fra noget andet. Hjælperne kan være små dyr, bakterier eller svampe - og det kan også være solens lys, vind eller vand.

Tit arbejder nedbryderne sammen i en nedbryder-kæde eller et nedbryder-net.

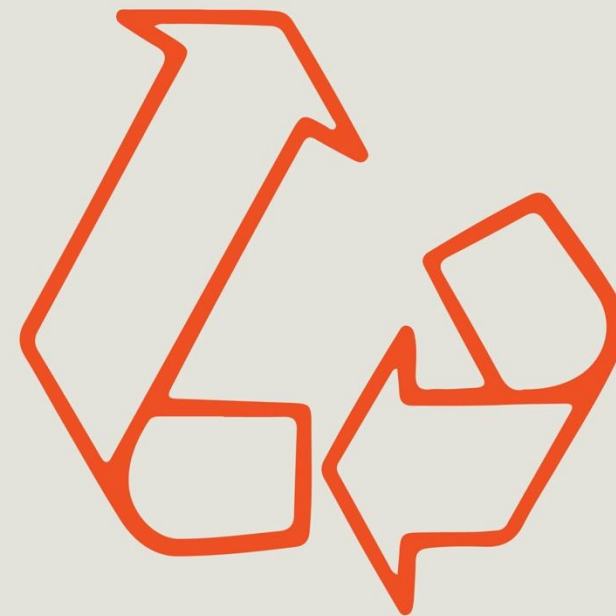
Source: Skoven i Skolen
<https://skoven-i-skolen.dk/leksikon/nedbrydning>



RECYCLE



DOWNCYCLE



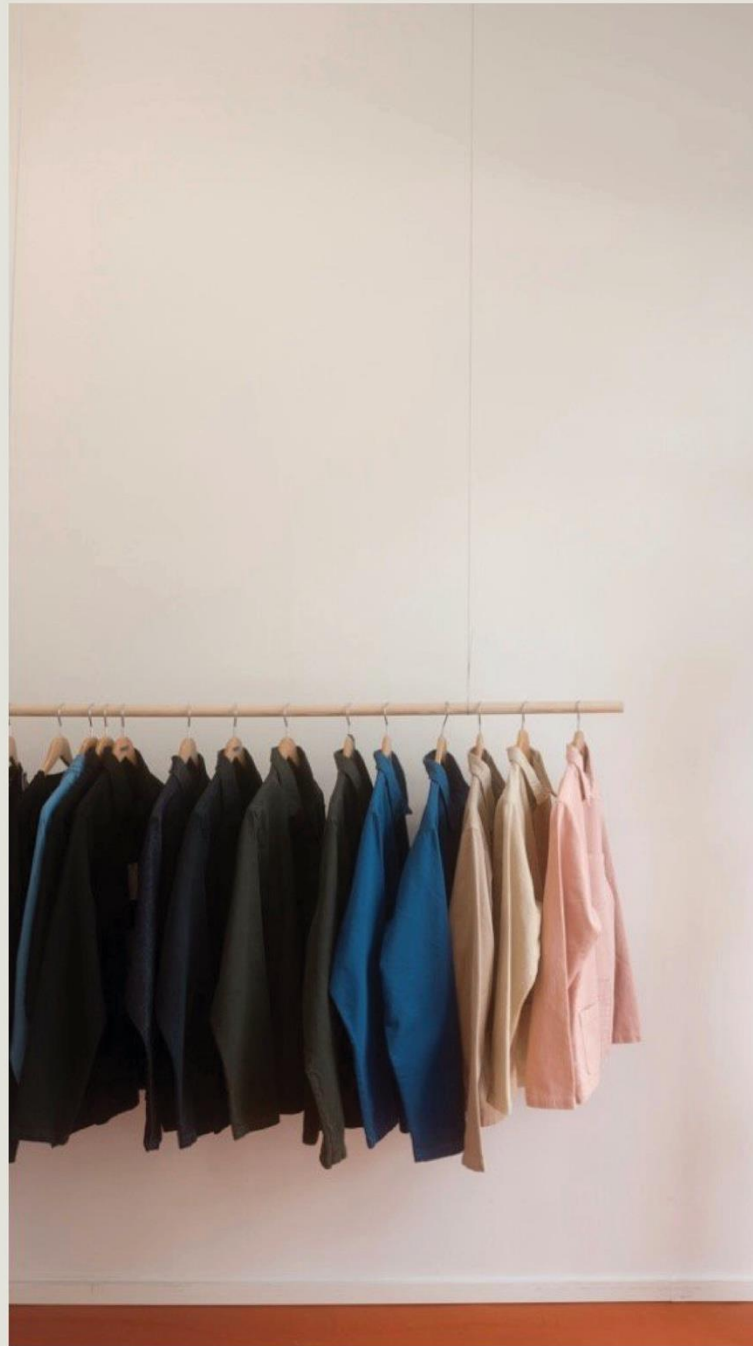
UPCYCLE

KLAUS SAM SØE

-

MADE IN DENMARK

“For mig handler det om at bruge alt.”



W VÆR

“Vores kerneprodukt er sko - eller det er det, vi startede med. Men vi har sagt at det med sko er starten.

Så vores kerne er mere det her med skalerbar tekstil upcycling.”



OUR SHIFT

“We are focusing on upcycling of textiles. That's our core product.

Figuring out how to upcycle textile into the wearable clothes and accessories.”



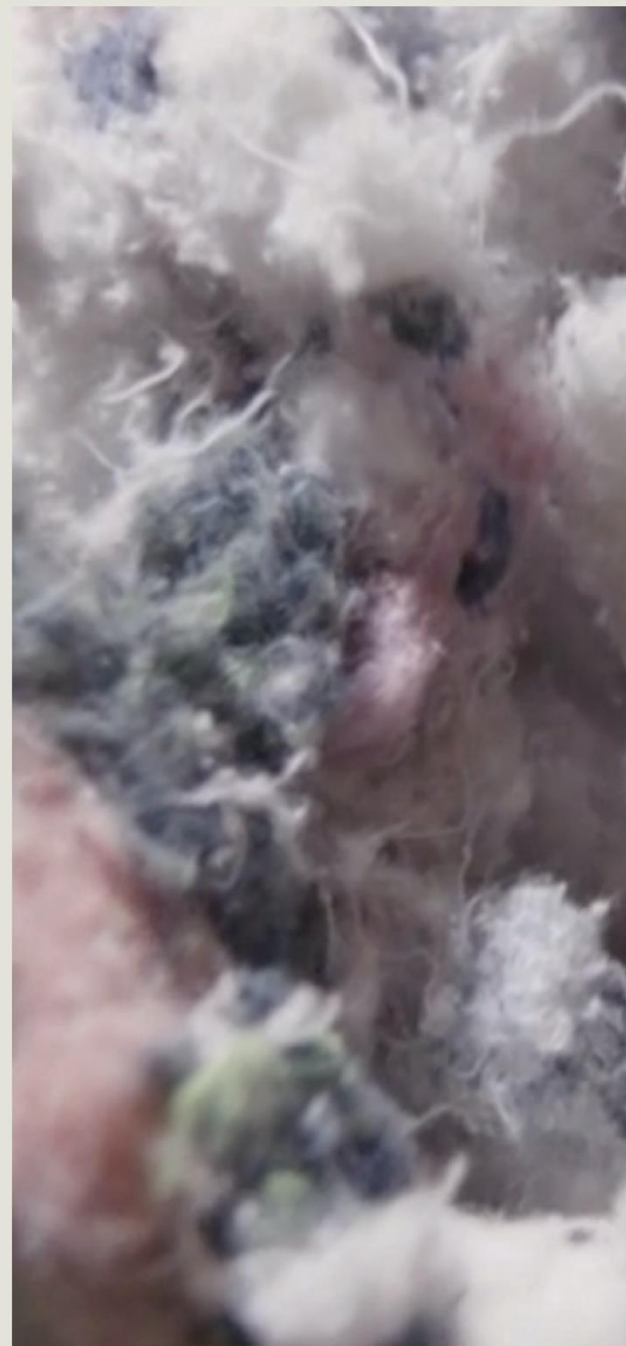
re do[®] x

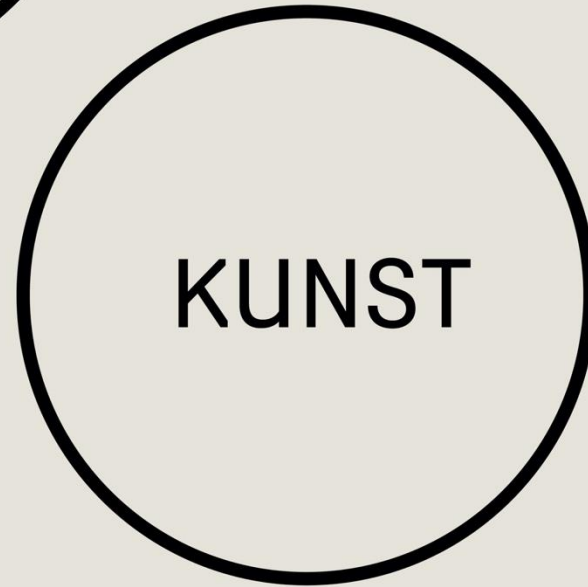


HAACK RECYCLING

SHRED RETHINK REUSE

“Mulighederne for genanvendelse bliver udvidet markant, når man kender den nøjagtige materialekomposition af det tekstil, man netop vil genanvende. Hvis man f.eks. vil genanvende udtjent tekstil til isoleringsmaterialer til byggeri, er nøjagtig og dokumenterbar viden om kompositionen og dens oprindelse en forudsætning for, at få en varig brandgodkendelse.”







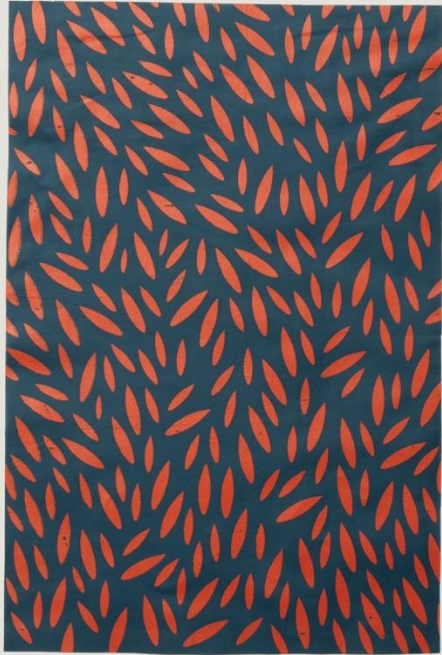
Det Kongelige
Akademi

Arkitektur
Design
Konservering





Technique: Silk screen printing with reactive colours (Printperfekt Lac Flex binder)
Material: Worn out denim jeans, cotton, exact composition unknown
Source: Clothes collected by VAER



Technique: Silk screen printing with reactive colours (Printperfekt Lac Flex binder)
Material: Tents, polyester
Source: Collected from festivals by Our Shift



Technique: Silk screen printing with reactive colours (Printperfekt Lac Flex binder)
Material: High Visibility Jacket, 100% polyester
Source: Workwear collected by VAER





Technique: Machine Embroidery (fill stitch)
Material: Worn out denim jeans, cotton, exact composition unknown
Source: Clothes collected by VAER

Artwork by Linnéa Andersson



Technique: Silk screen printing with reactive colours (Printperfekt
Lac Flex binder)
Material: Kansas jacket, 65% polyester, 35% cotton
Source: Workwear collected by VAER
Artwork by Amanda Tværmose Gleerup



Technique: Machine Embroidery (satin stitch)
Material: Thermal vest
Source: Discarded thermal wear by Klaus Samsøe



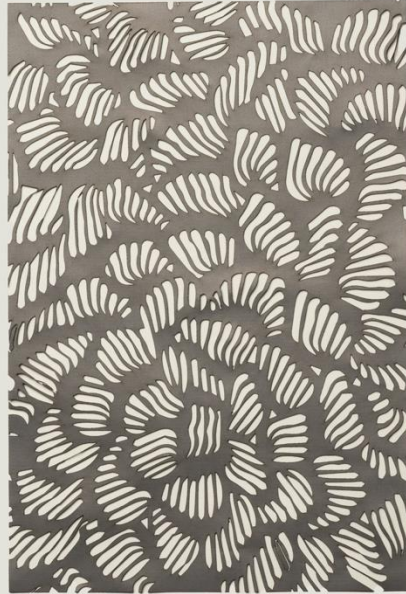
Technique: Lasercutting (power 50 % speed 100 %)
Material: High Visibility Jacket lining, 100 % polyester
Source: Workwear collected by VAER



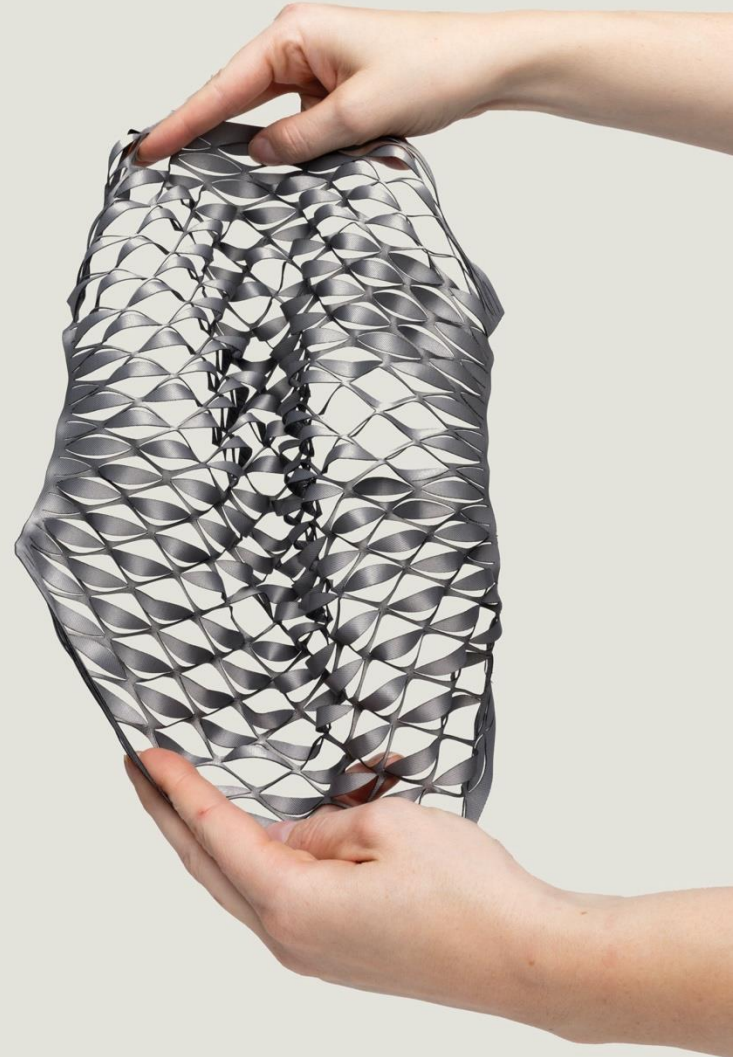
Technique: Lasercutting (75 % power, 40 % speed)
Material: Faux Suede Waterborn*, 85% polyester 15% polyurethane
Source: KVADRAT

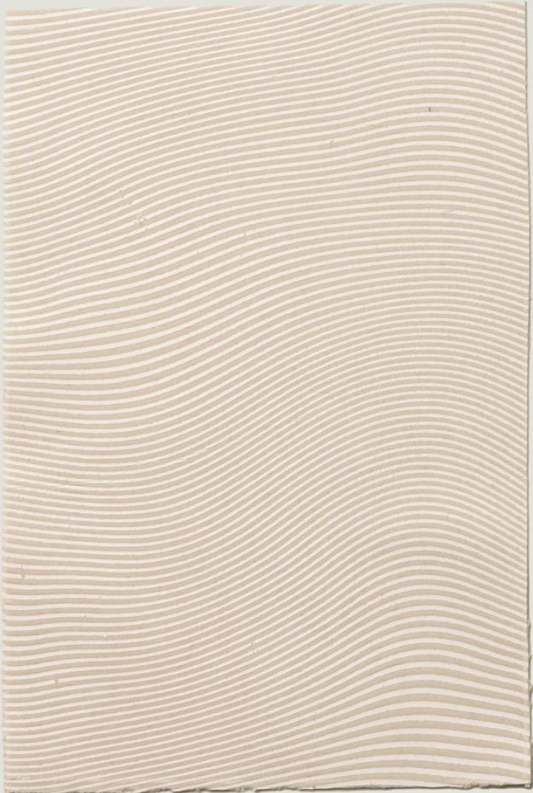


Technique: Lasercutting (power 50 % speed 100 %)
Material: Tents, polyester
Source: Collected from festivals by Our Shift

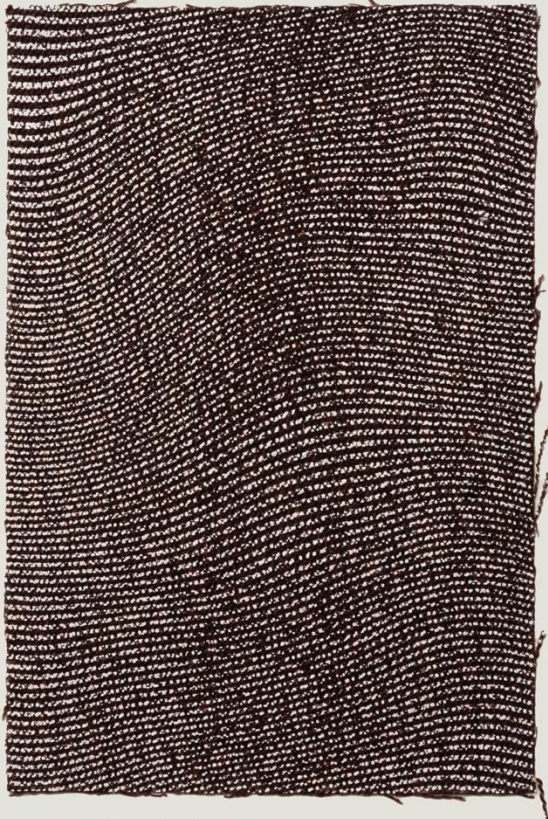


Technique: Lasercutting (75 % power, 40 % speed)
Material: Black out curtain Nightfall (1308), 68% polyester FR, 32% polyester
Source: KVADRAT





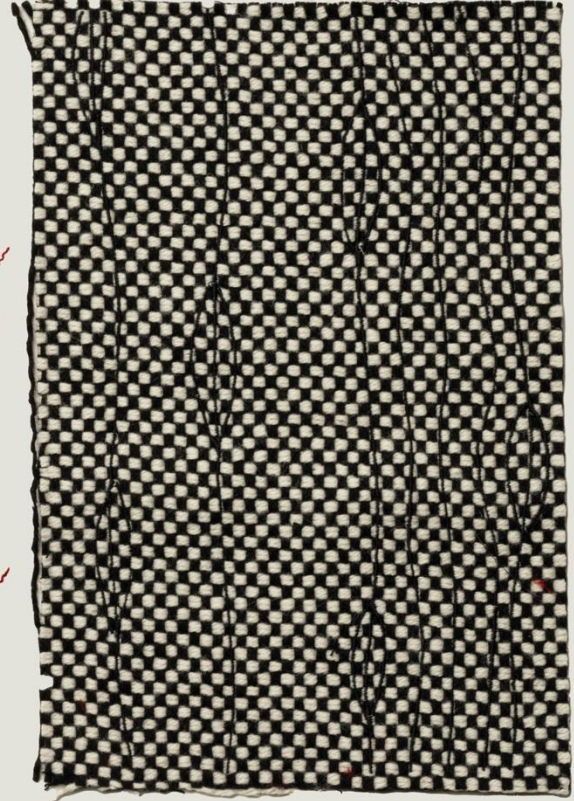
Technique: Silk screen printing with reactive colours (Printperfekt Lac Flex binder)
Material: Upholstery Cuba (600139), colour 002, 100% cotton
Source: KVADRAT
Artwork by Amanda Tværmose Gleerup



Technique: Silk screen printing with reactive colours (Printperfekt Lac Flex binder)
Material: Upholstery Vidar (8484), colour 693, 94% wool 6% nylon
Source: KVADRAT
Artwork by Amanda Tværmose Gleerup



Technique: Machine Embroidery (satin stitch)
Material: Upholstery Vidar (8484), colour 556, 94% new wool 6% nylon
Source: KVADRAT
Artwork by Agnes Saaby Thomsen for Østersøster



Teknik: Machine Embroidery (satin stitch)
Materiale: Upholstery Sisu (8088), colour 165, 91% new Norwegian wool 8%, new New Zealand wool, 1% nylon
Fra: KVADRAT



Det Kongelige
Akademi

Arkitektur
Design
Konservering





tak til alle der har deltaget i projektet

KLAUS SAMSE
-
MADE IN DENMARK

M A S A I
— COPENHAGEN —

→ **W**
VÆR

kvadrat

OUR SHIFT


HAACK RECYCLING
SHRED RETHINK REUSE

Lothar von
McVERDI

re do[®]

SELECTED
FEMME / HOMME



P R O E M
P A R A D E S

STINARAND

	<h1>Det Kongelige Akademi</h1>	<p>Arkitektur Design Konservering</p>
-----------------------------------------------------------------------------------	------------------------------------	-----------------------------------------------

